
Maple Bluff Village Gateway Public Walking Audit & Workshop

Maple Bluff Village Hall, 18 Oxford Place

October 30, 2007

5:30pm Walking Audit – Meet at Village Hall Then Tour Study Area

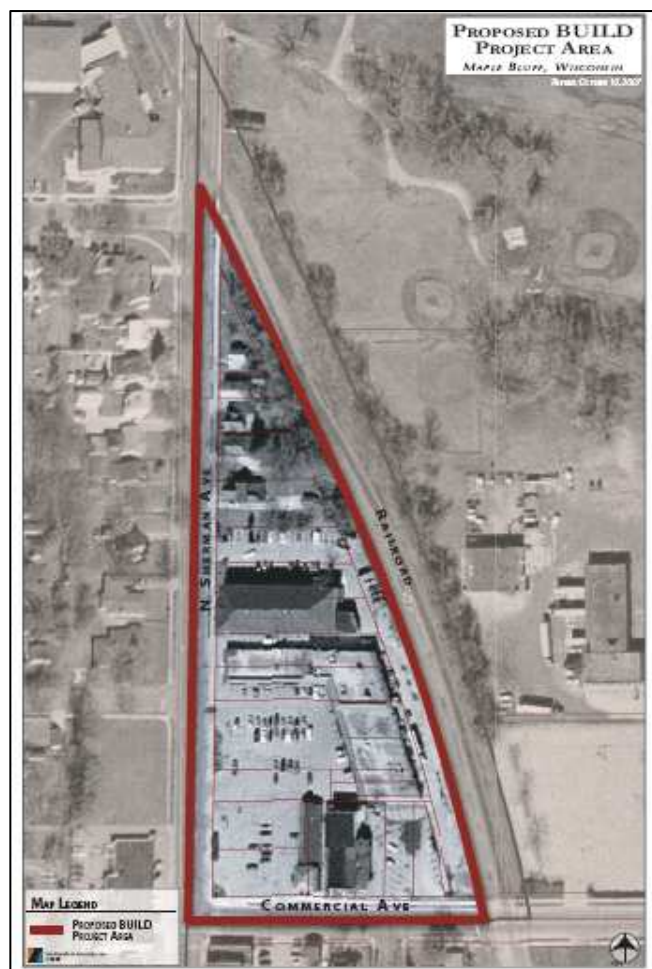
6:30pm Workshop – Interact About Future at Village Hall

The Village of Maple Bluff invites you to a walking audit and community workshop on **October 30, 2007 starting at 5:30pm.** The workshop is a great opportunity to work with your neighbors to discuss community goals, values and potential future uses and design of the “Village Gateway” area, shown on the map to the right.

In 2006, the Village of Maple Bluff annexed 22 parcels east of Sherman Avenue from the Town of Burke. The 2006 annexation of this area to the Village has created the opportunity for the Village to implement priorities identified in the community’s public visioning sessions and Comprehensive Plan. With your help, the Village now plans to:

- Create a vision for the mixed use urban revitalization of the North Sherman Avenue commercial area “Village Gateway.”
- Advance, in cooperation with property owners, a plan for the recently annexed parcels to create the energy, vitality, and activity to enhance the area as an economic asset and a place where residents and visitors want to live, work, shop, and play.
- Prepare a plan of action for the revitalization concept; including phasing, transportation improvements, and a financing strategy.

The future success of the Village Gateway and the Village are intertwined. The exact mix of future uses, development form, and phasing is not yet known—talking with the community and others associated with the site is a big part of creating the concept—your input is needed!



For more information, please call Tim Krueger, Maple Bluff Village Administrator, at 244-3048.

Village of Maple Bluff
18 Oxford Place
Madison, WI 53704

DON'T FORGET TO ORDER!!
BOY SCOUT WREATH & ROPING
CALL KIM or BLAIN RENFERT at (608) 241- 3159